



Optimal IdM Portal™

written for BMC® Identity Management for .NET

Extend the BMC® Identity Management for .NET Software

BMC®'s Identity Management for .NET software is the industry's leading Identity Management solution for the Microsoft .NET platform.

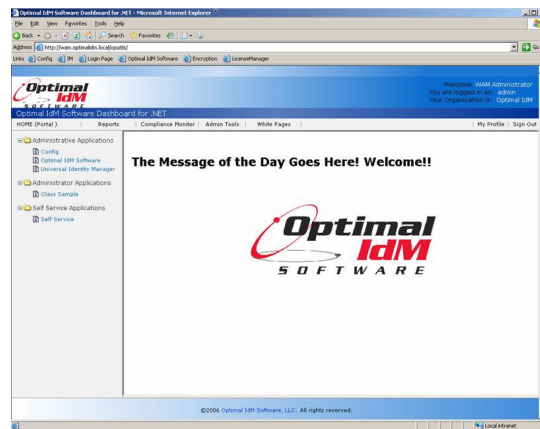
The Optimal IdM Portal™ is an essential tool that seamlessly integrates within the BMC framework to provide a feature-rich, customizable web portal. All without any custom coding.

The Optimal IdM Portal™ is a web portal specifically developed for the BMC® Identity Management for .NET product using Microsoft .NET technology.

The portal uses the built in roles and resource definitions of the BMC® Identity Management for .NET to **dynamically display hyperlinks** of only the applications that the end user is authorized to access. In addition, there are configurable areas of the portal to display static links to applications.



Optimal IdM Software developed the Optimal IdM Portal™ with the same API's that BMC® delivers with the Identity Management for .NET product and was used to develop BMC®'s Identity Manager interface.



This guarantees you a reliable and supported code base upon which our portal was built.

The Optimal IdM Portal™ also includes a configurable **message of the day**, as well as links to all self-service functions such as change password and update/view profile.

Content within the portal can be **grouped and sorted into categories by applications**, or can be sorted alphabetically.

Copyright © 2005-2007 Optimal IdM, L.L.C.
All rights reserved. All product names are trademarks or registered trademarks of their respective companies



Optimal IdM Portal™

written for BMC® Identity Management for .NET

Benefits

- **Provides an out of the box**, fully integrated web portal for use within the BMC® Identity Management for .NET product.
- **Allows for easy categorization & sorting** of available applications for end users.
- **Enables applications to be published** to users based on their roles. Users only see links to applications they are authorized to access.
- **Faster deployments** are possible by leveraging a pre-built dynamic portal that does not require any coding to roll-out a new application.

Features

- **Easily branded**— The portal (written in .NET ASPX pages) can be easily configured for your corporate look and feel requirements via style sheets (.css files)
- **Easily Hide & Display** content items displayed in the portal.
- **Configurable target location** for the hyperlink can display content in the top frameset, main frameset, or in a new browser window.
- **Role Based Integration**— The portal leverages the built in roles of the Identity system to display only the applications a user is authorized to access.
- **Message of the day**— A customizable message of the day can be configured to be displayed to all users of the system.
- **Custom Integrations** — Optimal IdM Portal™ can be queried via Web Services to **get a list of applications a user has access to**, making custom integrations with other portals applications quick and easy.

Software Requirements

- Microsoft IIS Web Server 5.0 or greater
- Microsoft SQL Server 2000 or greater
- Microsoft .NET Framework 2.0
- BMC® Identity Management for .NET software including .NET API
- 100 MB of Hard Disk Storage

Pricing

The Optimal IdM Portal™ is a module within the Optimal IdM Dashboard™

Please contact Sales@optimalidm.com for the latest pricing information.

About Us

Optimal IdM, LLC. is a leading provider of Identity Management solutions.

Headquartered in Land O' Lakes, Florida, Optimal IdM, LLC. provides sales and services through regional offices in the United States and a growing network of international resellers and distributors.

For more information about our products and services, please visit our website at <http://www.OptimalIdM.com>

Optimal IdM, LLC.
2209 Collier Parkway, Suite 140
Land O' Lakes, FL 34639

Email: Sales@optimalidm.com
Phone +1.813.425.6351
Fax +1.813.425.6351

Copyright © 2005-2007 Optimal IdM, L.L.C.
All rights reserved. All product names are trademarks or registered trademarks of their respective companies